

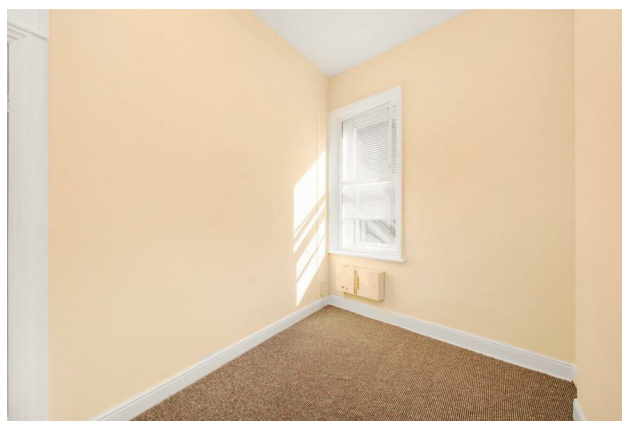
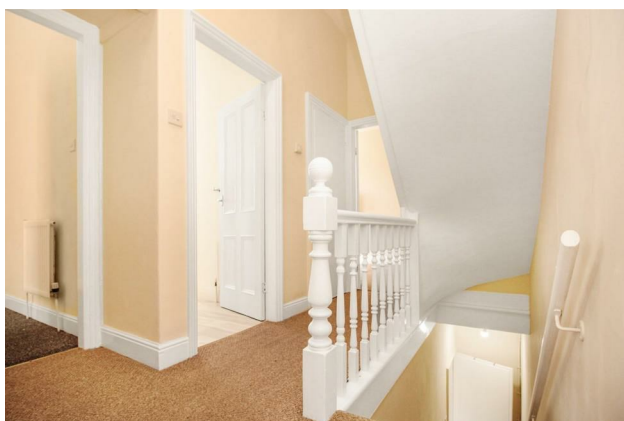
HUNTERS®

HERE TO GET *you* THERE

28 Paradise Grove, Horsforth, Leeds, LS18 4RN

£1,250 Per Calendar Month

Property Images



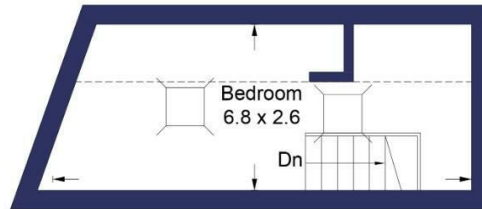
HUNTERS[®]

HERE TO GET *you* THERE

Property Images



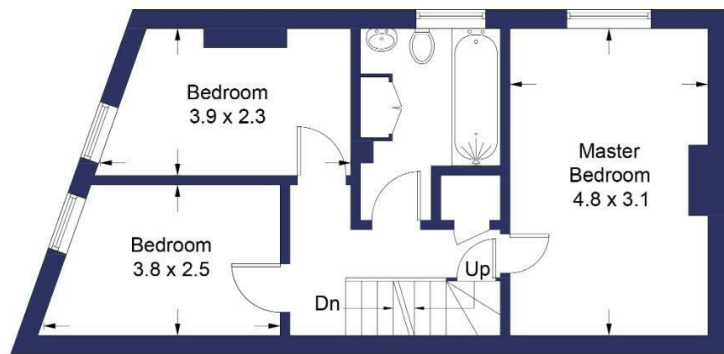
Floorplan



Second Floor




Ground Floor

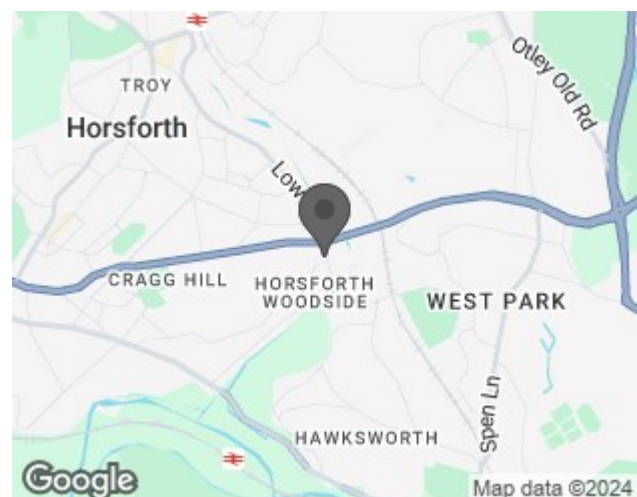


First Floor

EPC

Energy Efficiency Rating		
	Current	Potential
Very energy efficient - lower running costs		
(92 plus) A		74
(81-91) B		
(69-80) C		
(55-68) D		
(39-54) E	46	
(21-38) F		
(1-20) G		
Not energy efficient - higher running costs		
England & Wales		EU Directive 2002/91/EC 

Map



Details

Type: House - End Terrace Beds: 4 Bathrooms: 1 Reception: 1 Tenure:

Summary

Paradise Grove is a four bed, period stone terrace, fantastically located for easy commuting. Equidistant between Horsforth Train Station and Kirkstall Forge it also has great bus connections and road links to all of North Leeds. It is also within walking distance of convenience stores and restaurants.

Some of this homes features:

- Four Double Bedrooms
- Large Living Room
- Clean, bright, light kitchen
- Off Street parking
- Well maintained
- Redecorated
- Family bathroom
- Fantastic location

Property Available: 22nd July 2024

Deposit: 5 weeks

Unfurnished

Call us now to book your viewing.

Features

• FOUR BEDROOMS • STONE TERRACE • OFF STREET PARKING • WELL LOCATED FOR TRANSPORT CONNECTIONS • NEWLY DECORATED • AVAILABLE 21ST AUGUST 2023 • DEPOSIT: 5 WEEKS £1500 • EPC: E • COUNCIL TAX: B